

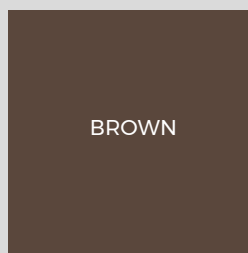
# BAMBOO DECKING

## FIXING CLIPS AND SCREWS



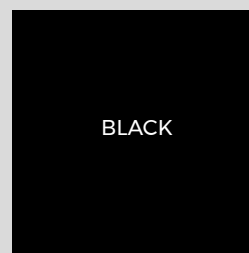
Cladco Fixing Clips and Screws are used to install Cladco Bamboo Hardwood Decking, they are designed to slide into the grooves of the Boards for a simple and safe installation. Fixing Clips are secured to your supporting decking substructure, this can be our Timber Joists or our Composite Joists, with one Clip per Joist.

### FIXING CLIP COLOUR



BROWN

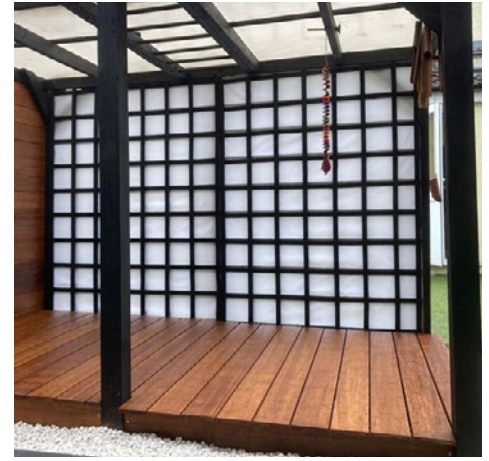
### SCREW COLOUR



BLACK

## SPECIFICATIONS

Screws	Stainless Steel M4x35mm, Torx Head (drill bit supplied)
Recommended Quantity	7 Clips per 2.44m Board, 8 Clips per 3.05m Board
Board Gap	6-7mm
Pack Quantity	100



## INSTALLATION ADVICE

### Joist Spacing

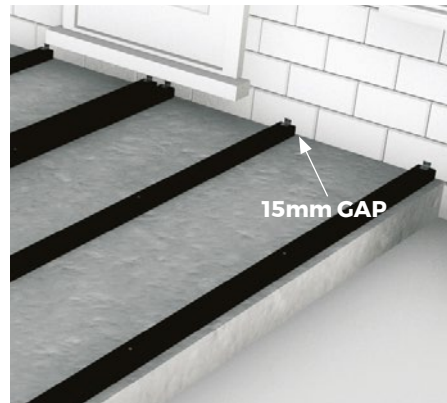
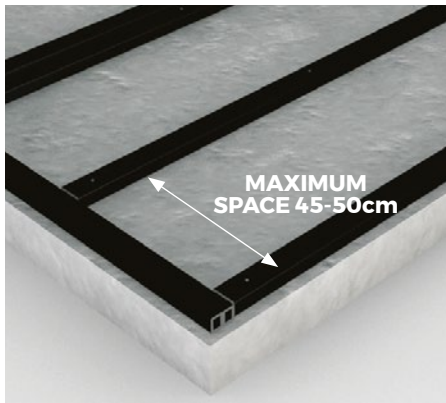
Cladco Bamboo Decking Fixing Clips slide into the grooves of the Boards and are fixed to each supporting Joist with Stainless Steel Screws. We advise a spacing of 45-50cm between each row of Joists.

### Board Installation

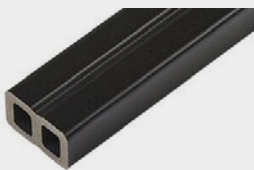
After the installation of your first Bamboo Board, the next Board can slide onto the Fixing Clips already in position. The rest of the Boards can then be installed using this method.

### Board Spacing

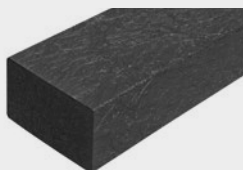
Where the ends of two Bamboo Decking Boards meet, secure a Fixing Clip to hold into place. A 2mm space should be left between the butt joints.



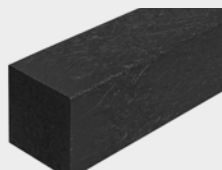
## PRODUCT ACCESSORIES



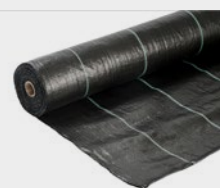
COMPOSITE JOISTS



RECYCLED  
PLASTIC JOISTS



RECYCLED  
PLASTIC POSTS



WEED  
CONTROL MAT



BAMBOO DECKING  
STARTER CLIPS