

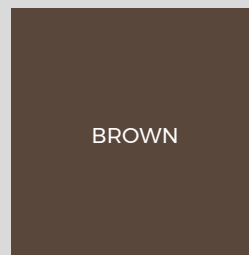
BAMBOO DECKING

STARTER CLIPS AND SCREWS



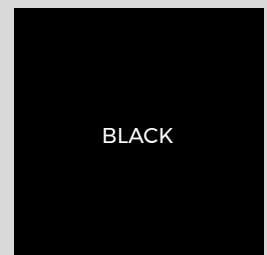
Cladco Starter Clips and Screws enable our Bamboo Decking Boards to be installed flush against your wall or fence. Starter Clips allow for an accurate and precise installation of Bamboo Decking Boards. Supplied in packs of 50, with Stainless Steel 35mm Screws and a Torx drill bit, each Clip provides three fixing holes for ease of use.

**FIXING CLIP
COLOUR**



BROWN

**SCREW
COLOUR**



BLACK

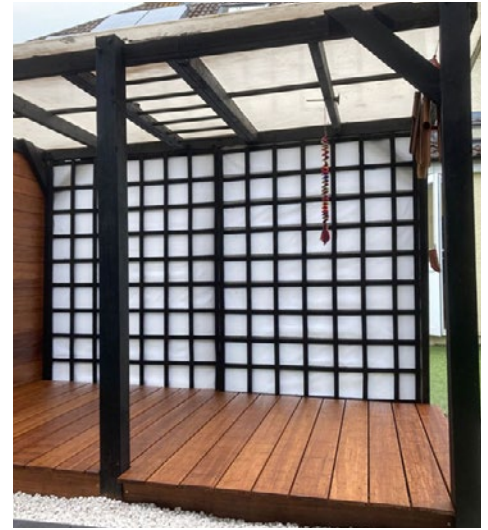
SPECIFICATIONS

Screws

Stainless Steel M4x35mm, Torx Head (drill bit supplied)

Pack Quantity

50



INSTALLATION ADVICE

Joist Spacing

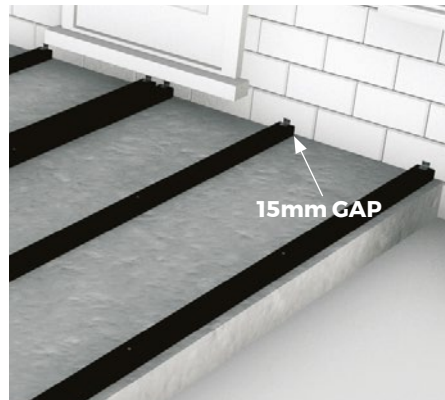
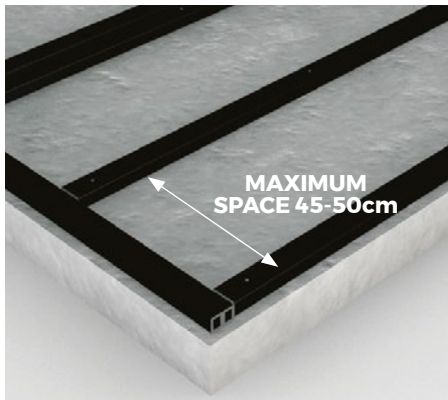
You will need to install your Joists to create the substructure your Bamboo Decking Boards will lay on. We advise a spacing of 45-50cm between each row or Joists. Our Composite Joists are recommended for this step.

Starter Clips

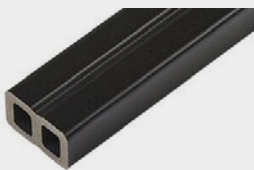
Before Bamboo Decking Boards are installed, Cladco Bamboo Decking Starter Clips are fixed onto each Joist end where the Boards will lay. Allow a small gap between your wall/fence and the Clips.

Board Installation

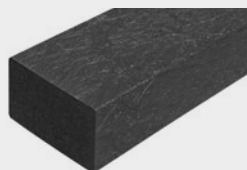
Once your Starter Clips are installed onto the ends of your Joists, you can now lay your first Decking Board, connecting with each Starter Clip it crosses. The rest of the Decking Boards are then secured using our Fixing Clips.



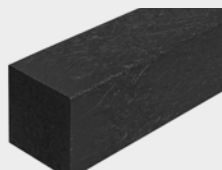
PRODUCT ACCESSORIES



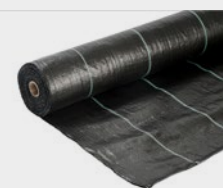
COMPOSITE JOISTS



RECYCLED PLASTIC JOISTS



RECYCLED PLASTIC POSTS



WEED CONTROL MAT



BAMBOO DECKING FIXING CLIPS