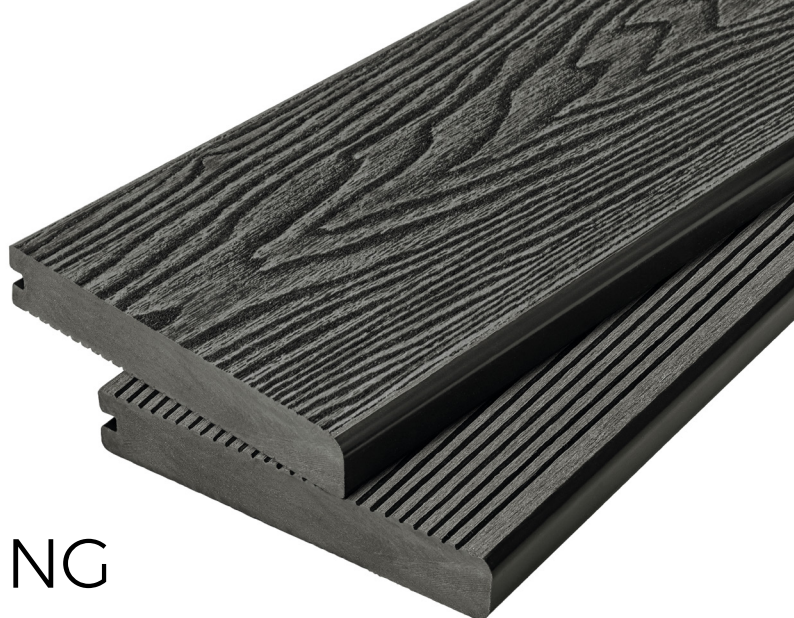
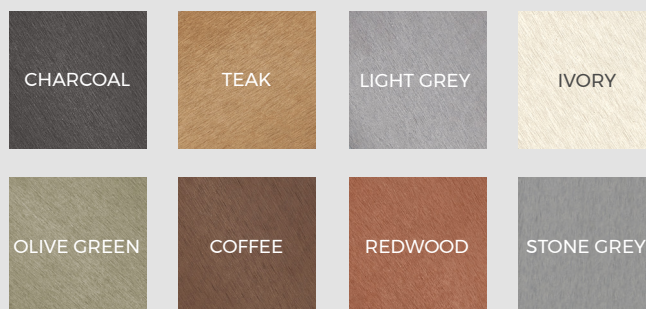


4M BULLNOSE REVERSIBLE COMPOSITE DECKING



Cladco Bullnose Reversible Composite Decking features a solid core design for durability and strength around the perimeter of your Composite Decking area and steps. Bullnose Decking Boards are available in 4m lengths and in eight attractive colours to suit your area. Choose either a high-quality Woodgrain Effect or low-slip Narrow Grooves depending on your preference.

COLOUR RANGE

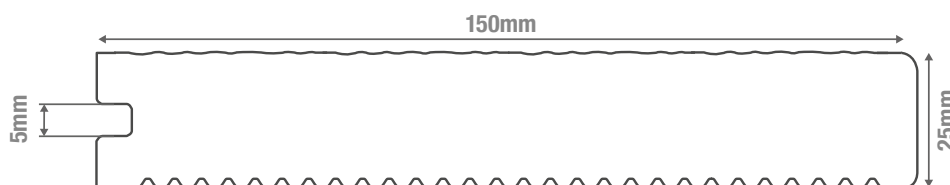


BOARD SPECIFICATIONS

Length	4m
Width	150mm
Thickness	25mm
Coverage	0.6m ²
Weight	20.52kg

TEST CERTIFICATIONS

FSC® Certification	SA-COC-005542
Fire Rating	CFL - s1 (EN 13501-1:2018)
Slip Resistance	DRY - Low-slip potential (Narrow Groove side) WET - Moderate slip potential (Narrow Groove side)





Woodgrain effect



Manufactured from 100% recycled materials



Install using T-Clips or hidden Clip System



Solid construction for increased strength



Designed with a curved edge to frame your decking



Narrow grooves provide a low-slip surface



MATERIALS

Composite wood-plastic mix comprising 60% hardwood fibres, 40% recycled plastics.



SURFACES

Choice of either a Woodgrain Effect or Narrow Grooves for your outdoor space.



ACCESSORIES

Complete your Cladco Decking® area with Composite Fascia Boards and Trims.



LOW MAINTENANCE

Unlike timber, Cladco Composite Decking Boards do not need to be sealed, stained or varnished.



GUARANTEE

Cladco Composite Decking is supplied with a 15-Year Guarantee.

TEMPERATURE EXPANSION

Cladco Composite Decking Boards will naturally expand and contract with changing temperatures. To account for this, it is essential to follow our recommended guidelines when installing Boards, particularly where two Boards meet end-to-end at butt joints.

SPACING GUIDELINES FOR BUTT JOINTS:

- 7mm spacing at temperatures of 5°C and below
- 6mm spacing at temperatures between 5°C and 15°C
- 5mm spacing at temperatures of 15°C and above

RECYCLED MATERIALS

Cladco Composite Decking is manufactured using 100% recycled materials, reducing our impact on the environment. A mix of 60% recycled hardwood fibres and 40% recycled, post-consumer plastics provides each

Board with low-maintenance and long-lasting benefits.

Additional anti-UV agents, colour tints, bonding agents and additives are used to bind the materials to create a durable Composite Decking Board.

All Cladco Composite products are available as FSC® certified for the same cost. If you require FSC® certified products, please ask for these when placing your order.

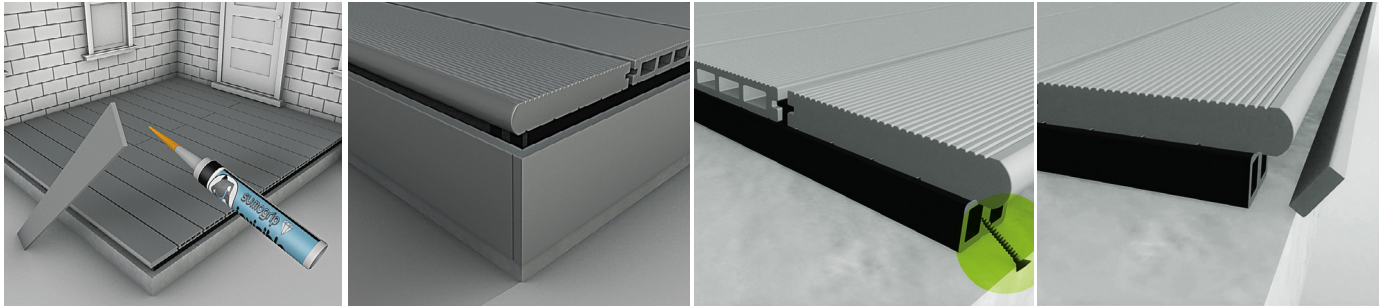
AFTERCARE

As a Composite material, Cladco Composite Decking Boards will naturally accumulate dirt when exposed to outdoor conditions. For everyday debris such as plants, leaves, berries, or animal droppings, simply brush your Decking with a broom and warm, soapy water. In cases of more stubborn dirt or grime, pressure washing may be necessary to restore the Decking's appearance.

INSTALLATION ADVICE

Bullnose Finish

Please note that Bullnose Boards are intended for use as borders around your Composite Decking area. Due to natural batch variations and the timber within the Boards, they are not designed to blend seamlessly with the rest of your Composite Decking. For an enhanced aesthetic, we recommend choosing a contrasting colour to create a picture frame effect.



Adhering to these guidelines will help ensure proper installation and longevity of your Composite Decking. Failure to follow these guidelines will invalidate the product's warranty.

COLOUR STABILISATION

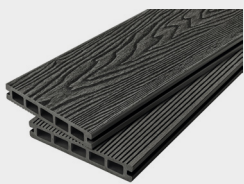
All Cladco Composite products contain UV stabilisers; however, due to their natural elements, all Composite products will undergo an initial colour stabilisation process. This may result in some changes in colour during the first few months after installation as the product acclimatises to its environment.

NATURAL WEATHERING

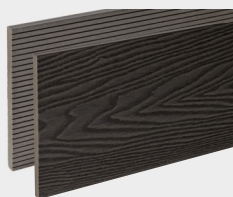
As Cladco Composite Decking Boards contain natural wood elements, they will fade from weathering over time. This process is most noticeable within the first six months after installation. Please be aware that the appearance of Composite Boards will change depending on weather conditions and, when wet, Boards will display a different tone compared to when they are dry.

For detailed information about installation, please read our Composite Decking Installation Guide.

PRODUCT ACCESSORIES



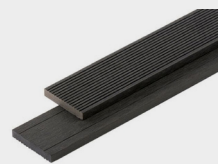
DECKING BOARDS



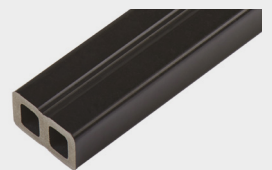
FASCIA BOARDS



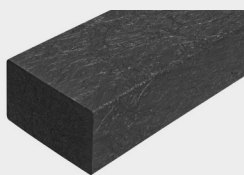
CORNER TRIMS



SKIRTING TRIMS



COMPOSITE JOISTS



RECYCLED
PLASTIC JOISTS



STAINLESS STEEL
CLIPS AND SCREWS

11 required per 4m Board



T-CLIP FIXINGS
AND SCREWS

11 required per 4m Board



SPEEDDEKZ 316
DECKING SCREWS