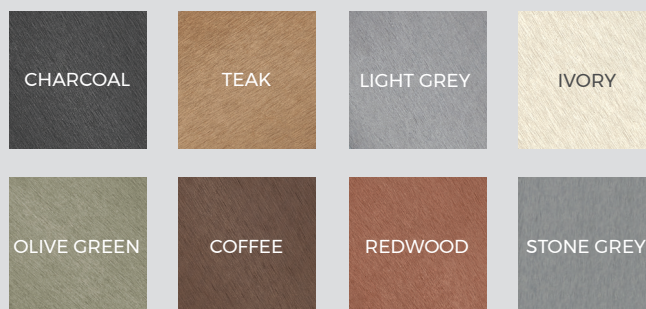


2.4M REVERSIBLE COMPOSITE FASCIA

Cladco Composite Fascia Boards feature a reversible design to match your Composite Decking project, concealing exposed Joists in a raised substructure. Fascia Boards can also be used to seal off any gaps in your Composite Cladding project, to prevent debris and pests from entering.

COLOUR RANGE

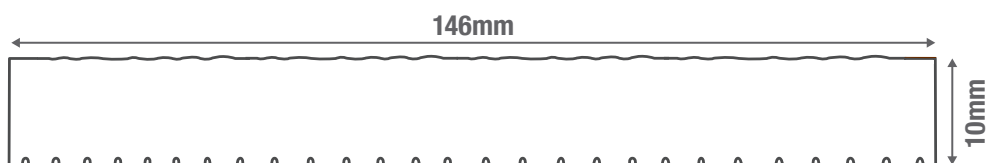


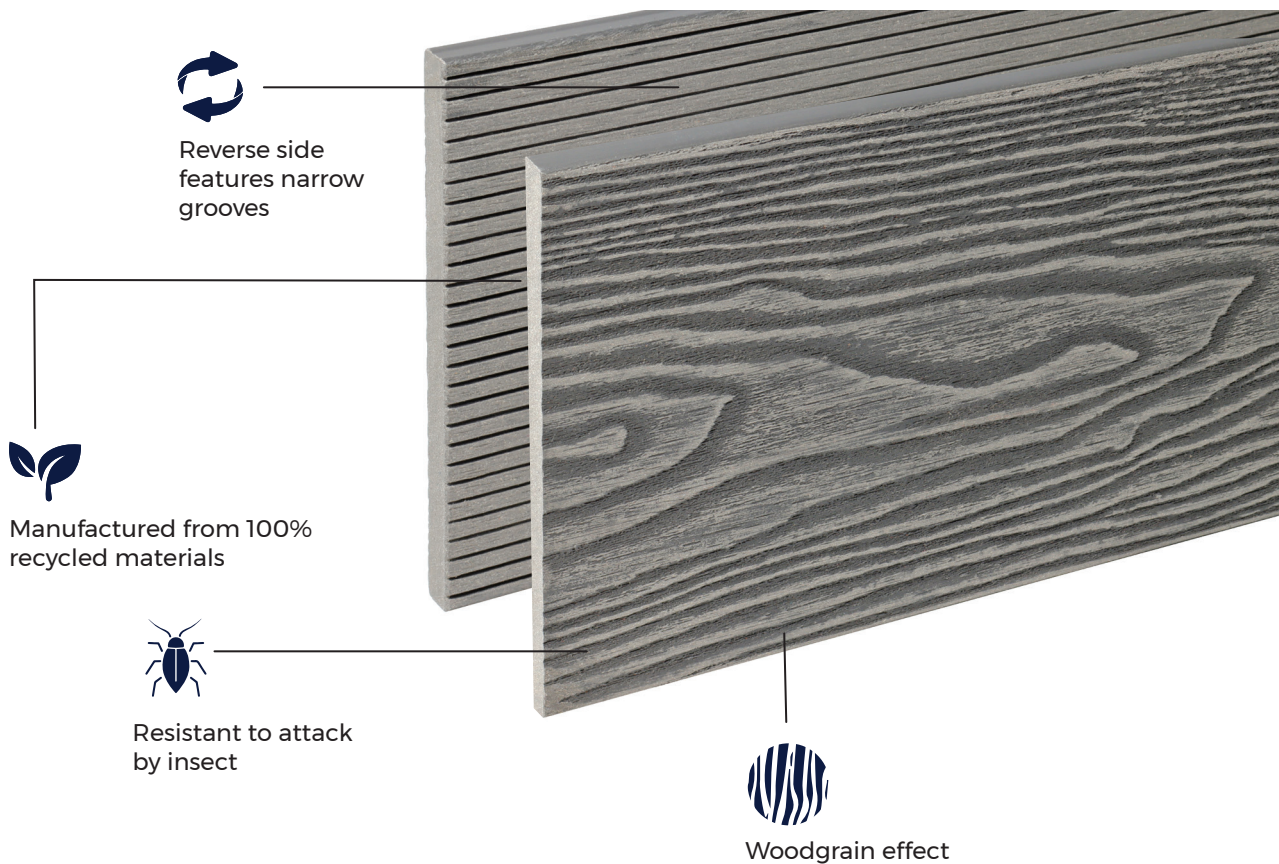
BOARD SPECIFICATIONS






Length	2.4m
Width	146mm
Thickness	10mm
Weight	4kg

TEST CERTIFICATIONS

FSC® Certification SA-COC-005542





 <p>MATERIALS</p> <p>Composite wood-plastic mix comprising 60% hardwood fibres, 40% recycled plastics.</p>	 <p>SURFACE</p> <p>Choice of either a Woodgrain Effect or Narrow Grooves for your outdoor space.</p>	 <p>ACCESSORIES</p> <p>Composite Fascia Boards can be installed with 50mm SPEEDDEKZ Screws or CTI Adhesive.</p>	 <p>LOW MAINTENANCE</p> <p>Unlike timber, Cladco Composite Fascia Boards do not need to be sealed, stained or varnished.</p>	 <p>LONG LASTING</p> <p>Cladco Composite Fascia Boards are a long lasting addition to your Decking or Cladding project.</p>
--	--	---	--	---

RECYCLED MATERIALS

Cladco Composite Fascia Boards are manufactured using 100% recycled materials, reducing our impact on the environment. A mix of 60% recycled hardwood fibres and 40% recycled, post-consumer plastics provides each Board with low-maintenance and long-lasting benefits.

Additional anti-UV agents, colour tints, bonding agents and additives are used to bind the materials to create a durable and fade resistant Composite Board.

All Cladco Composite products are available as FSC® certified for the same cost. If you require FSC®

certified products, please ask for these when placing your order.

AFTERCARE

As a Composite material, Cladco Composite Fascia Boards will naturally accumulate dirt when exposed to outdoor conditions. For everyday debris such as plants, leaves, berries, or animal droppings, simply brush your Boards with a broom and warm, soapy water.

In cases of more stubborn dirt or grime, pressure washing may be necessary to restore the Board's appearance.

DECKING INSTALLATION ADVICE

Screws

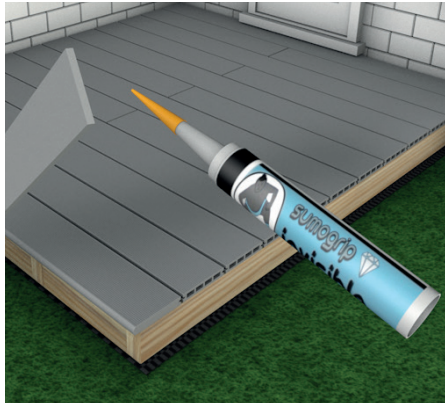
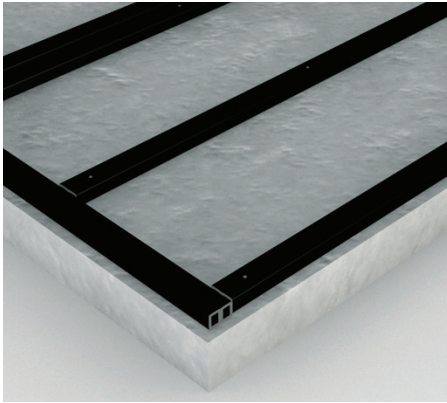
Composite Fascia Boards can be fixed to your Composite Decking or Joists using 50mm SPEEDDEKZ Deck Screws. The Screws need to be inserted 13mm away from the edge of your Fascia Board.

Adhesive

A strong adhesive, such as CTI, can be used to install Composite Fascia Boards. CTI comes in a range of colours to match your colour choice.

Screws and Adhesive

For the best results, use a combination of Screws and Adhesive for a superior finish. To do so, alternate between Adhesive and Screws every 150mm.



COLOUR STABILISATION

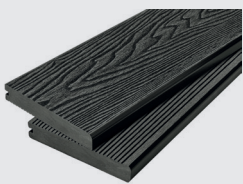
All Cladco Composite products contain UV stabilisers; however, due to their natural elements, all Composite products will undergo an initial colour stabilisation process. This may result in some changes in colour during the first few months after installation as the product acclimatises to its environment.

NATURAL WEATHERING

As Cladco Composite Fascia Boards contain natural wood elements, they will fade from weathering over time. This process is most noticeable within the first six months after installation. Please be aware that the appearance of Composite Boards will change depending on weather conditions and, when wet, Boards will display a different tone compared to when they are dry.

For detailed information about installation, please read our Composite Decking Installation Guide.

PRODUCT ACCESSORIES



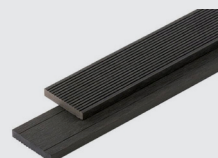
BULLNOSE BOARDS



SPEEDDEKZ SCREWS



CORNER TRIM



SKIRTING TRIMS



CTI ADHESIVE