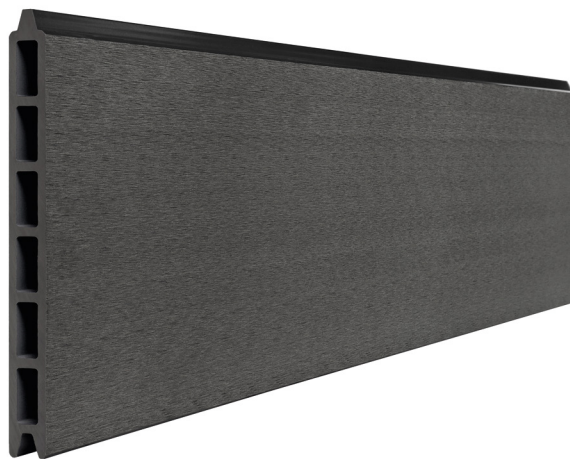
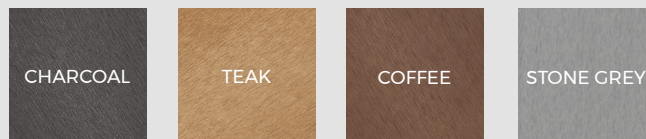


# 3.6M COMPOSITE FENCING PANEL



Cladco Composite Fencing Panels come in 3.6m lengths with a height of 200mm when installed. Composite Fencing consists of a six-hole honeycomb design that increases strength and durability, protecting your Composite Fence from damage against extreme weather. A range of contemporary colours are available, making for an attractive timber alternative.

## COLOUR RANGE

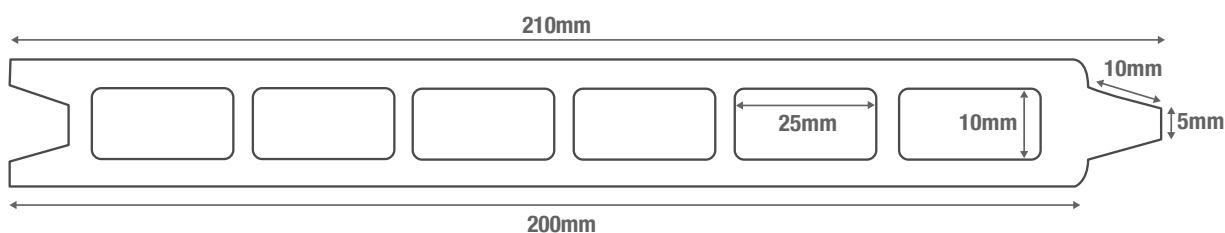


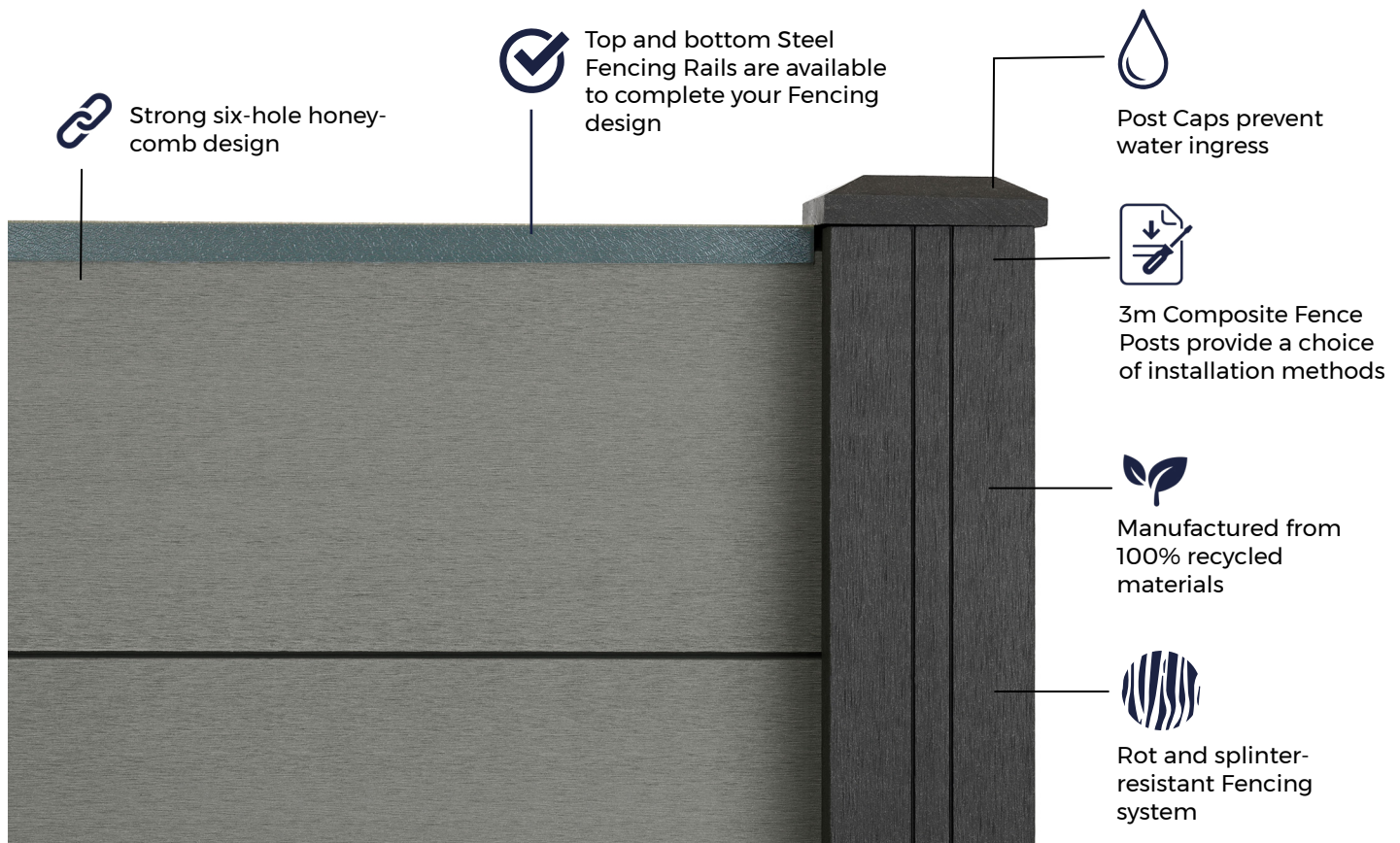
## PANEL SPECIFICATIONS






Length	3.6m
Height	210mm (200mm installed)
Weight	11.52kg

## TEST CERTIFICATIONS

FSC® Certification SA-COC-005542





 <p><b>MATERIALS</b></p> <p>Composite wood-plastic mix comprising 60% hardwood fibres, 40% recycled plastics.</p>	 <p><b>INSECT RESISTANCE</b></p> <p>The recycled plastic content in Composite Fencing resists insects and pest attacks.</p>	 <p><b>ACCESSORIES</b></p> <p>Complete you Cladco Fencing with Composite Fencing Posts and Post Caps.</p>	 <p><b>LOW MAINTENANCE</b></p> <p>Cladco Composite Fencing Panels do not need staining, varnishing or treating.</p>	 <p><b>LONG LASTING</b></p> <p>Cladco Composite Fencing Panels are a long lasting addition to your outdoor project.</p>
--	--	--	--	--

## RECYCLED MATERIALS

Cladco Composite Fencing is composed of 100% recycled materials consisting of 60% recycled hardwood fibres and 40% recycled plastic. As post-consumer plastic is utilised in Composite Fencing, it makes for an environmentally friendly option.

Additives of anti-UV agents, tints and bonding agents are included to bind together the recycled materials, this allows for a sturdy and long-lasting Fence.

All Cladco Composite products are available as FSC® certified for the same cost. If you require FSC® certified products, please ask for these when placing your order.

All Cladco Composite products are available as

FSC® certified for the same cost. If you require FSC® certified products, please ask for these when placing your order.

## AFTERCARE

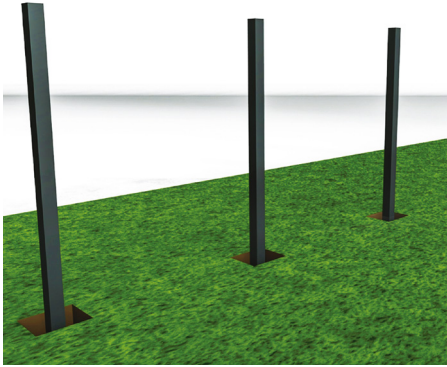
As a Composite material, Cladco Composite Fencing Panels will naturally accumulate dirt when exposed to outdoor conditions. For everyday debris such as plants, leaves, berries, or animal droppings, simply brush your Fencing with a brush and warm, soapy water.

In cases of more stubborn dirt or grime, pressure washing may be necessary to restore the Fencing's appearance.

## INSTALLATION ADVICE

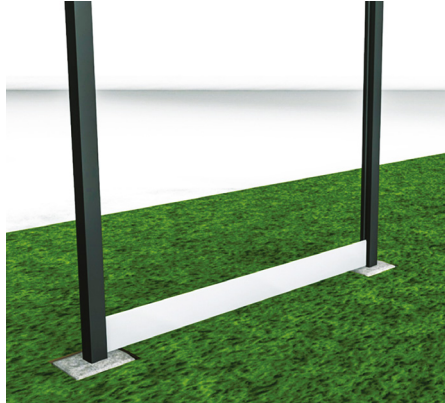
### Prepare The Area

Remove any debris from the area and mark the Fence Post holes. These should be dug 25% of the Post's height. To efficiently support the Fence Panels, Posts must be a maximum of 1.8m apart.



### Method One

The slot between method requires Fence Panels to be cut into lengths of 1.8m. Panels simply slot into the grooves of the Posts once channelled out. Posts can then be topped with Fence Post Caps and Fence Rails to complete the project.



### Method Two

Alternatively, secure each 3.6m Panel to the front of the Posts, with a Composite Post every 1.8m apart for support. The top and bottom of the Fence Panels should then be screwed to the front of the Posts.



## COLOUR STABILISATION

All Cladco Composite products contain UV stabilisers; however, due to their natural elements, all Composite products will undergo an initial colour stabilisation process. This may result in some changes in colour during the first few months after installation as the product acclimatises to its environment.

## NATURAL WEATHERING

As Cladco Composite Fencing Panels contain natural wood elements, they will fade from weathering over time. This process is most noticeable within the first six months after installation.

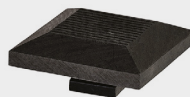
Please be aware that the appearance of Composite Panels will change depending on weather conditions and, when wet, Panels will display a different tone compared to when they are dry.

For detailed information about installation, please read our Composite Fencing Installation Guide.

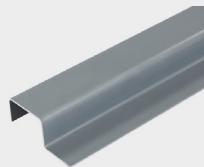
## PRODUCT ACCESSORIES



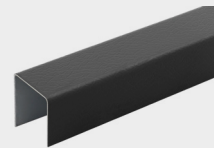
FENCING PANEL POSTS



FENCING POST CAPS



CONCRETE POST SPACER



FENCING RAIL



STRAIGHT CUT TIN SNIPS