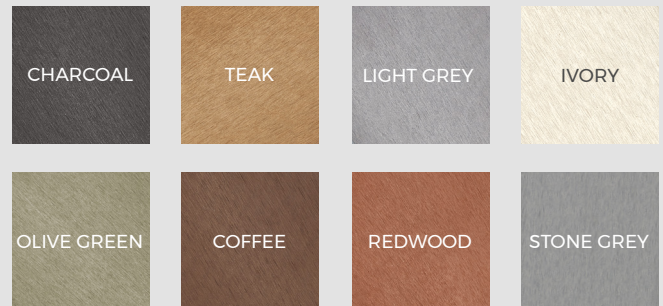


WOODGRAIN REVERSIBLE COMPOSITE DECKING

Cladco Woodgrain Effect Reversible Composite Decking features a five-hole honeycomb design for enhanced strength and ease of handling. Composite Decking Boards are available in 2.4m and 4m lengths, and in eight attractive colours to suit your project. Durable and versatile, Composite Decking offers a stylish solution for outdoor spaces.

COLOUR RANGE

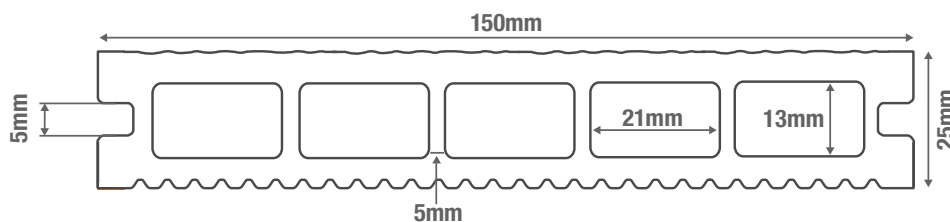


BOARD SPECIFICATIONS

Length	2.4m & 4m
Width	150mm
Thickness	25mm
Coverage	0.36m ² (2.4m) 0.6m ² (4m)
Weight	6.72kg (2.4m) 11.2kg (4m)

TEST CERTIFICATIONS

FSC® Certification	SA-COC-005542
Fire Rating	CFL - s1 (EN 13501-1:2018)
Slip Resistance	DRY - Low-slip potential (Narrow Groove side) WET - Moderate slip potential (Narrow Groove side)





Woodgrain effect



Manufactured from 100% recycled materials



Five-hole construction for increased strength



Install using T-Clips or hidden Clip System



Narrow grooves provide a low-slip surface



MATERIALS

Composite wood-plastic mix comprising 60% hardwood fibres, 40% recycled plastics.



SURFACES

Choice of either a Woodgrain Effect or low-slip Grooves for your outdoor space.



ACCESSORIES

Complete your Cladco Decking® area with Composite Bullnose Boards and Trims.



LOW MAINTENANCE

Unlike timber, Cladco Composite Decking Boards do not need to be sealed, stained or varnished.



GUARANTEE

Cladco Composite Decking is supplied with a 15-Year Guarantee.

TEMPERATURE EXPANSION

Cladco Composite Decking Boards will naturally expand and contract with changing temperatures. To account for this, it is essential to follow our recommended guidelines when installing Boards, particularly where two Boards meet end-to-end at butt joints.

SPACING GUIDELINES FOR BUTT JOINTS:

7mm spacing at temperatures of 5°C and below
6mm spacing at temperatures between 5°C and 15°C
5mm spacing at temperatures of 15°C and above

RECYCLED MATERIALS

Cladco Composite Decking is manufactured using 100% recycled materials, reducing our impact on the environment. A mix of 60% recycled hardwood fibres and 40% recycled, post-consumer plastics

provides each Board with low-maintenance and long-lasting benefits.

Additional anti-UV agents, colour tints, bonding agents and additives are used to bind the materials to create a durable Composite Decking Board.

All Cladco Composite products are available as FSC® certified for the same cost. If you require FSC® certified products, please ask for these when placing your order

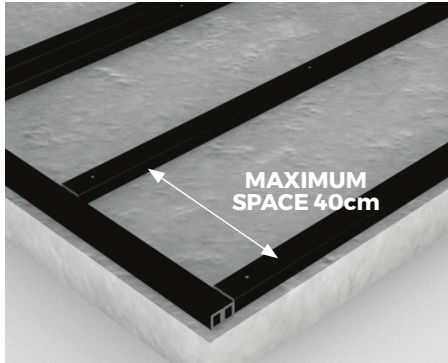
AFTERCARE

As a Composite material, Cladco Composite Decking Boards will naturally accumulate dirt when exposed to outdoor conditions. For everyday debris such as plants, leaves, berries, or animal droppings, simply brush your Decking with a broom and warm, soapy water. In cases of more stubborn dirt or grime, pressure washing may be necessary to restore the Decking's appearance.

INSTALLATION ADVICE

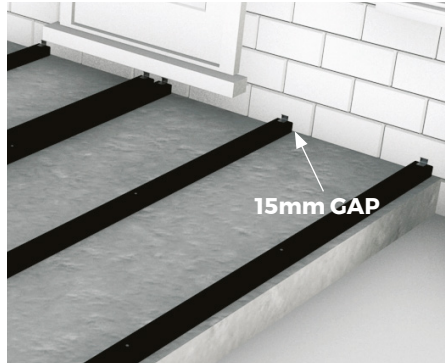
Joist Spacing

Cladco Composite Decking Joists can be worked with normal woodworking tools and are easily fastened to a suitable supporting Joist substructure, installed with a maximum Joist spacing of 40cm.



Starter Clips

Starter Clips need to be fixed to the end of the Composite Joists before laying the first Board. Leave a gap of 15mm between walls and Joists to allow for expansion.



Butt Joints

Double joists must be installed at butt joints to provide adequate support for each Board end. Additionally, Fixing Clips must be used at each Board end, and Boards should never share a fixing clip.



Adhering to these guidelines will help ensure proper installation and longevity of your Composite Decking. Failure to follow these guidelines will invalidate the product's warranty.

COLOUR STABILISATION

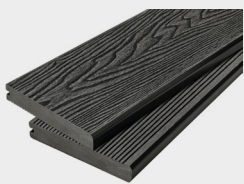
All Cladco Composite products contain UV stabilisers; however, due to their natural elements, all Composite products will undergo an initial colour stabilisation process. This may result in some changes in colour during the first few months after installation as the product acclimatises to its environment.

NATURAL WEATHERING

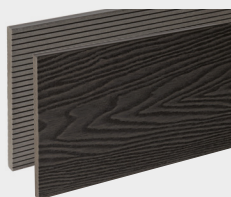
As Cladco Composite Decking Boards contain natural wood elements, they will fade from weathering over time. This process is most noticeable within the first six months after installation. Please be aware that the appearance of Composite Boards will change depending on weather conditions and, when wet, Boards will display a different tone compared to when they are dry.

For detailed information about installation, please read our Composite Decking Installation Guide.

PRODUCT ACCESSORIES



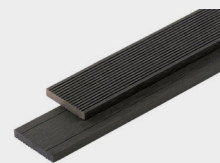
BULLNOSE BOARDS



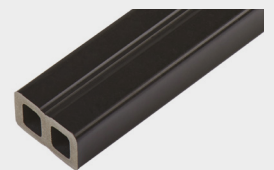
FASCIA BOARDS



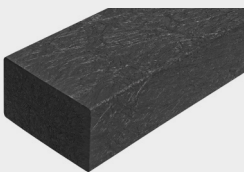
CORNER TRIMS



SKIRTING TRIMS



COMPOSITE JOISTS



RECYCLED
PLASTIC JOISTS



STAINLESS STEEL
CLIPS AND SCREWS

11 required per 4m Board



T-CLIP FIXINGS
AND SCREWS

11 required per 4m Board



STAINLESS STEEL
STARTER CLIPS



HOLLOW DECKING
END CAPS