

PRODECK HIDDEN DECKING CLIPS AND STAINLESS STEEL SCREWS



Ensure proper installation of your ProDeck Boards with these Stainless Steel Hidden ProDeck Decking Clips and Screws. They are designed for a seamless fit and each Clip secures the Capped Composite Boards with a standard 3mm gap.



MANUFACTURED FROM STAINLESS STEEL FOR A DURABLE RESULT



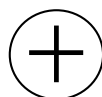
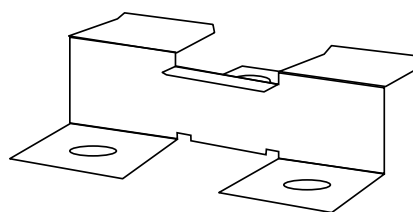
RESISTANT TO CORROSION



EASY INSTALLATION

HIDDEN CLIPS AND SCREWS SPECIFICATIONS

Screw Length	30mm
Board Gap	3mm
Pack	100 (Per pack)
Material	Stainless steel (Screws) Stainless steel (Clip)





MATERIALS

The Screws are made from stainless steel to ensure strength and reliability.



SURFACES

Designed to fit into the grooved edges of the Capped Composite Decking Boards for a clean surface finish.



ACCESSORIES

Can be installed alongside Starter Clips to provide strong fixture of your Capped Composite Decking.



LOW MAINTENANCE

Once fixed, the hidden clip and Screws are protected from weather elements which minimises maintenance.



LONG-LASTING

The materials of both the Hidden Clips and the Screws makes them durable an long-lasting for years to come.

Starter Clips

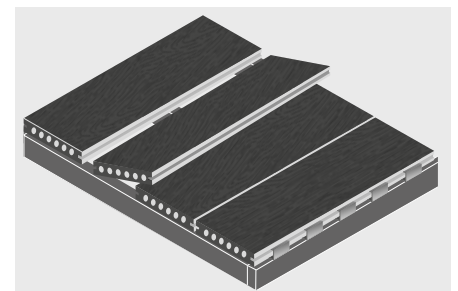
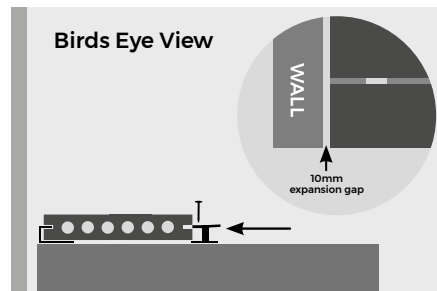
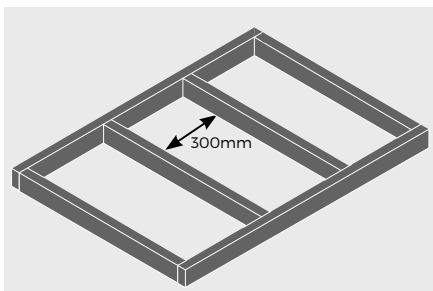
ProDeck Bullnose/Starter Clips need to be fixed to the end of the Joists before laying the first Board, leaving a gap of at least 10mm between any walls and the Starter Clip.

Expansion Gap

Do not allow ProDeck Capped Composite Boards to meet at the ends. Hidden Clips will leave a 3mm expansion gap between each Board to allow for expansion and contraction in temperature changes. It is not recommended that Boards are installed in temperatures below 5-degrees.

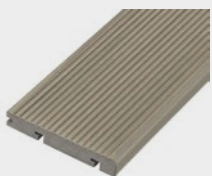
Last Boards

For the final two Boards, measure the width of both Boards together (including the 3mm expansion gap) to discover where the outer edge of the final Board will lie and mark out with a pencil on the below joists. Use this mark to fit the final Bullnose/Starter Clips and slot the last Board into place using these Clips.



Adhering to these guidelines will help ensure proper installation and longevity of your Capped Composite Decking. Failure to follow these guidelines will invalidate the product's warranty.

PRODUCT ACCESSORIES



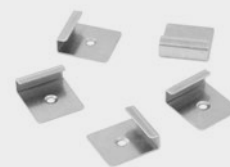
PRODECK BULLNOSE BOARDS



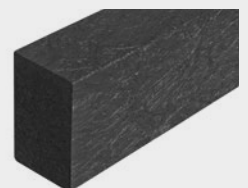
PRODECK FASCIA BOARDS



PRODECK DECKING BOARDS



PRODECK STARTER/BULLNOSE CLIPS



RECYCLED PLASTIC JOISTS